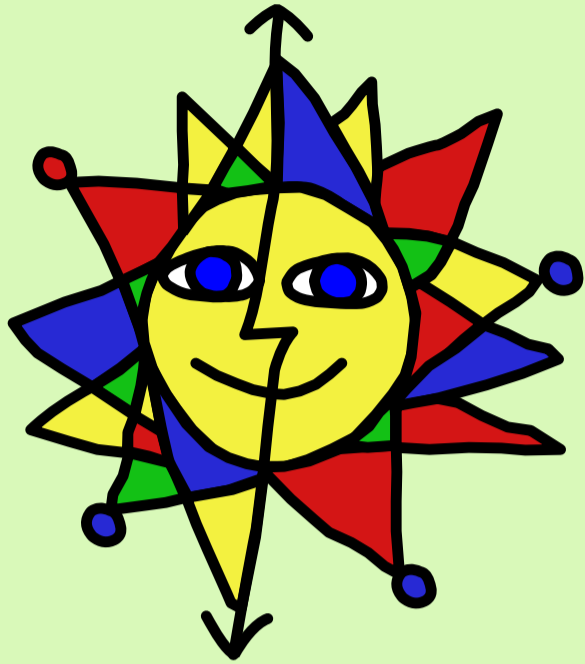


Swavesey Festival



**Saturday 19th June
to
Saturday 26th June
2010**

Saturday 19 June

10.00am-6.00pm

FLOWER FESTIVAL

Bethel Baptist Church

Come and share the many ways the *Going Green* theme has been interpreted by our arrangers. Open to all Saturday and Sunday unless a service is taking place.

1.00pm

CARNIVAL PARADE

Depart Swavesey Primary School and follow the Swan! Let's make this even bigger and brighter than the last one! The theme this year is *Swavesey Goes Green* so get your thinking caps on and collect re-cycling material to make those costumes.

Details: Jane 230947

1.30pm-5.00pm

GALA AFTERNOON

Village Green

The Gala afternoon starts at approximately 1.30pm when the parade returns to the green and the Festival Week is formally opened. There will be something for everyone again:

- Country Fair
- Food Stalls
- Entertainment
- Climbing Tower

VILLAGE SHOW: a MUCH bigger marquee this year to hold all the exhibits: fruit and vegetables, flowers, cookery, preserves, crafts and junior sections too. Look for the schedule on the Festival website - www.swaveseyfestival.org.uk - or in shops, doctors' surgeries, schools, library or ring 01954 230774.

10.00am-4.00pm

QUILTING EXHIBITION

Swavesey Village College

Another brilliant exhibition for the Festival. Hand made items, quilting materials and accessories will be available for sale. Please note the times of opening - this high quality exhibition is advertised nationally. Teas and light refreshments will also be available

8.00pm-late

MIDSUMMER'S PAVILION PARTY IN THE PARK

Village Green

Proceeds from this event will help fund the new pavilion that is scheduled for the village green.

Tickets: Nicole Mullee @ 01954 201061, Gary Peet @ 01954 202459, Jerry Ladell @ 01954 201018

A very warm welcome

to the second Swavesey Festival!

A full programme of events, some familiar, some new, has been organized again for all the family for the eight days between 19th and 26th June, 2010. This leaflet gives you the details of what, where and when each event is happening.

You will see that most events are ticketed this year so that we can plan properly for numbers to ensure the health and safety of everyone; many events are free and where there is a charge we have kept the price as low as possible.

TICKETS will be available from April 22 first to residents of Swavesey and those whose children attend school in Swavesey. Tickets will be available to the wider community from May 15

Some events sold out very quickly last time so book early to avoid disappointment. Unless otherwise indicated on this programme, all tickets can be obtained from the Box Office 07930 188915 9.00am - 9.00pm.

Any updates or changes will be posted on our website: www.swaveseyfestival.org.uk

**We look forward to another exciting, fun-filled and sunny week.
See you there!**

**Programme sponsored by
Windmill Kennels and Cattery and
Pamela Stevens Interiors.**

Sunday 20 June

7.00am

NOT QUITE THE DAWN CHORUS

Holywell Lake Car Park (TL342700 - across the busway) Dawn on 20th June is too early for some people, so why not join us at 7.0am? We'll expect the rich songs of blackbird, blackcap and garden warbler, perhaps a cuckoo. Max. no. 25 Tickets 50p. Box Office

10.00am-4.00pm

SPARTANS' FOOTBALL DAY

Village Green

A day of small sided football matches, with the presentation of a memento to each boy or girl who has played for the Spartans during the season, and awards for each team's player of the year and the most improved player.

Bring a picnic and enjoy this annual event.

10.00am-4.00pm

QUILTING EXHIBITION

Swavesey Village College

Your last chance to see this wonderful exhibition. Hand made items, quilting materials and accessories will be available for sale. Please note the times of opening - this high quality exhibition is advertised nationally. Teas and light refreshments also available.

10.30am

A WALK AROUND MEDIEVAL SWAVESY

Meet at the Turnbridge.

Did you know that we had a castle, drawbridge, docks and earth works here in the village? Come and find out. Join our local historian John Shepperson for a tour around the medieval parts of Swavesey. Likely to be very popular so book tickets early.

Tickets £1: Box Office

10.30am-12.30 and 2.00-4.00pm

AT HOME WITH THE ARTIST

Dairy Farm, 31 Boxworth End.

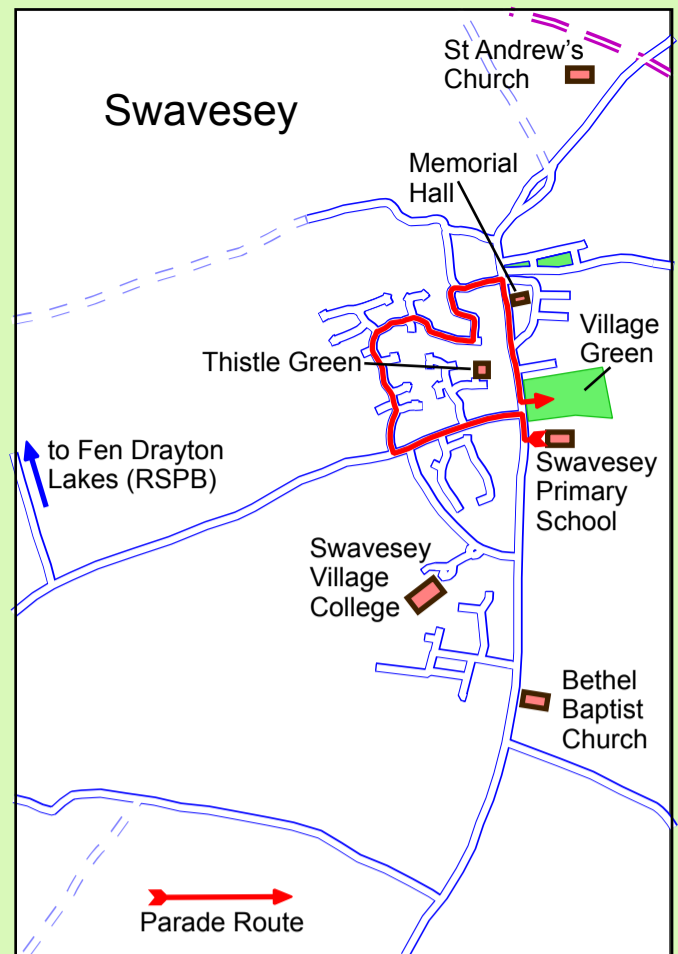
Professional artist Peter Nuttall invites you to his home to enjoy his work and style.,

1.00pm-2.30pm & 4.15pm-7.00pm

FLOWER FESTIVAL

Bethel Baptist Church

Last chance to see the many ways the *Going Green* theme has been interpreted by our arrangers. Open to all Saturday and Sunday unless a service is taking place.



SCARECROW COMPETITION

Swavesey Meridian Women's Club invite the people of Swavesey to enter a Scarecrow Competition to be held during Festival week. Scarecrows should be displayed in a position visible from the roadway and able to be viewed throughout Festival week. Each entry is £2.50. There will be a prize for the most original scarecrow. Further details and entry form available from Theresa Ouzman (tel: 230773) and Judy Kingsbury (tel: 230284).

2.00pm-7.00pm

OPEN GARDENS

About 20 gardens will be open over Sunday and Monday: large gardens and small, formal and informal, perfect and in progress. Tea & cakes available at some. See separate leaflet for details.

3.00pm

FESTIVAL PRAISE

Bethel Baptist Church

Come and worship God in a 'Café Church' setting surrounded by the displays of the Flower Festival and celebrating the varied aspects of the life of the Swavesey Community.

7.30pm

CONCERT

St Andrew's Church

WHITE ROSE TRIO

and SWAVESY

COMMUNITY

CHOIR

Do you remember

Jonathan Sage

playing Mozart's

clarinet concerto

with the London

Mozart Players in 2008? He and two other musicians now

form the White Rose Trio. They will play Mozart's

Divertimento Number 1, Three Scottish Miniatures, a

Gershwin Medley, and Hummel's Trio in B major. After

the Interval, with refreshments, the Swavesey Community

Choir will perform Karl Jenkins' The Armed Man: A Mass

for Peace and African Music arranged by Alexander

L'Estrange.

Tickets: £9; Under 18 £2 from Choir Members and 01954

201840.



The Festival Steering Committee would like to thank everyone involved in this Festival for their time and effort.



Monday 21 June

10.30am

BATS

St Andrew's Church

Everyone is welcome at this Baby and Toddler Service, especially pre-school children and their parents/ carers. Join us for a story, songs, prayer and craft and an opportunity to chat over a drink and a biscuit.

2.00pm-7.00pm

OPEN GARDENS

About 20 gardens will be open over Sunday and Monday: large gardens and small, formal and informal, perfect and in progress. Tea & cakes available at some. See separate leaflet for details.

4.00pm-5.00pm

POND DIPPING

RSPB pond, Fen Drayton. (Holywell Lake Car Park TL342700)

Have fun investigating the amazing creatures that live under water here.

Ages 6-14. Children must be accompanied by an adult. Tickets essential, from Box Office. Ring Neil Renwick to confirm times: 01954 233260/233267

6.00pm

BLACKOUT

Drama Studio Swavesey Village College

An extended monologue by Davey Anderson based around a series of interviews he held with a young offender in Glasgow. It presents an enormous challenge to the theatre company as Anderson's only instruction in the script is that some things be left to the imagination! Tickets SVC.

6.30pm

GREEN EVENING AT SWAVESEY VILLAGE COLLEGE

St Cecilia Hall

GREEN ENERGY

SVC Student Energy monitors have teamed up with local company, 'Green Energy Options Ltd' and will tell you how the College has saved over £5,500 in a year and how you can join a FREE community project to save money in your own home. They will also describe other ways to Cut Your Carbon, saving money and helping the environment. Followed by:

7.30pm GARDENERS' QUESTION TIME

Bring your questions to our experts:

- Roger Holland, well known Swavesey Gardener
- Nick Kyberd, well known Swavesey Gardener
- Julia Mulcaster from Oakington Garden Centre
- Peter Jackson from Scotsdale Garden Centre, Radio Cambridgeshire, Cambridge Evening News

Tickets £2 for Green Evening and Gardeners' Question Time Box Office

Tuesday 22 June

CREATIVITY MORNING

Memorial Hall

Choose from:

9.30am-1.30pm

Willow weaving: Watch Alan Morris demonstrate his skill making practical every day objects, such as baskets and trays, and have a go yourself. Max no. 10
Tickets £3 Box Office

10.00am-11.00am, 11.00am-12.00noon - Two sessions

Design-a-bag

Make your own canvas shopping bag using screen-printing with Ricki Outis. Max. no. 10 per session

Tickets £3 + £3 for bag Box Office

10.00am-12.30pm

Choir and Drum Workshop

Come along and learn songs from around the world. No previous experience or the ability to read music needed. Have a fun time and perhaps join the Over Community Singers and Drummers in the evening concert. Max. no. 20
Tickets £3 Box Office

2.00pm

SWAVESEY OLD AND NEW

Thistle Green Community Centre

John Shepperson takes us on a virtual tour through the village using archive video material, slides and photographs to show the changes over the years

John's talks sell out very quickly - 40 tickets only - book early!

Tickets £1 Box Office

3.30pm-4.00pm

SCULPTURE EXHIBITION

Swavesey Primary School

The Primary School is having an Artist in Residence. The children will be using recycled objects to make 2D and 3D sculptures, for this exhibition.

4.00pm-4.30pm

CONCERT

Swavesey Primary School

A concert by Year 5/6 pupils led by local musician Ian Nye, of short pieces of music using junk percussion made out of everyday objects.

Free

4.00pm

TALES OF THE RIVER BANK

Swavesey Library at the Village College

Story time with a picnic tea, face painting and fun for children, parents and carers. Limited to 40 children.

Tickets 50p. Box Office.

5.00pm

COOKERY DEMONSTRATION

Swavesey Village College - Food Room

Swavesey Village College's competition award winning cookery teams will explain the secrets of their success and demonstrate the skills of cooking a healthy, locally sourced meal to tempt you into the kitchen and try it for yourself.

Tickets from SVC

7.30pm

BELL RINGING

St Andrew's Church

Sunday by Sunday the bells of St Andrew's summon us to worship and they ring out for weddings and to mark special occasions. Come and find out how it's done. The Bell Ringers will give you a warm welcome and an opportunity to have a go.

7.30pm

AN EVENING OF ENTERTAINMENT

Swavesey Village College

The **Over Community Singers and Drummers** will present songs and rhythms from around the world, including Africa, Eastern Europe, and U.S.A. They will be joined for some songs by those who took part in the workshop earlier in the day.

RADSOC Swavesey RADSOC present their Cambridge Drama Festival play set in a London Underground station, late one night in the 1990s. "Tunnel Vision" by Sheila Hodgson.

Tickets £2

Wednesday 23 June

10.00am onwards.

PLAYTIMERS' TEDDY BEARS' PICNIC

Bring your Teddy Bear for a play, a sing and a picnic! Anyone under 5 is welcome - please bring an adult!

Tickets: £3 from Becky Dear: 01954 203250

2.00pm

BINGO

Thistle Green Community centre

Come and enjoy an afternoon of Bingo with us at Thistle Green Community Centre. Tea and cakes provided.

Tickets 50p Box Office

5.00pm-6.00pm

FAMILY CONCERT

Swavesey Village College

This concert is aimed at primary-aged children featuring performances from college groups and from the Swavesey Music School Saturday groups. Audience participation is encouraged!

Tickets: SVC

7.30 pm.

LAGER AND LAUGHS

St. Cecilia's Hall, Swavesey Village College

You bring the lager and our 3 professional stand-ups bring the laughs:

Chris Neill, Jane Hill and Dan Evans, compere Rob Broderick.

Doors open 7.30pm, entertainment starts 8.00ish

Tickets £6

7.30 pm.

NATURE WALK

Led by Tim Parish/Charlotte Lowry

Venue to be advised.

Tickets 50p Box Office

Thursday 24 June

10.30am-12.00noon

Compass Café

"Encompasses the community"

Bethel Baptist Church

Take a break. Sit down and have a chat. Catch up with friends. Join us for a coffee, tea and yummy cakes. The Compass Café will be running as usual during festival week.

CREATIVITY AFTERNOON

Memorial Hall

Choose from:

1.30pm-3.30pm

Spice up Your Life

Watch Sarita Woolhouse demonstrate Indian vegetarian cooking and cook your own supper dish to take home. Max. no. 10. Tickets £3 Box Office

1.30pm-5.30pm

Portrait Photography

Come and try your hand at taking your own photographic portraits. Tips on lighting, computer processing and printing from Simon Shore.

Max. no 10. Tickets £3 Box Office

1.30pm-2.30pm, 2.30pm-3.30pm (2 sessions)

Create a Mug

Design your own bone china mug- for a special gift or souvenir- with Amanda Macphail. Max. no. per session 10.

Tickets £3 + £3 for mug Box Office

7.30pm

MEDIEVAL SWAVESEY

St Andrew's Church

When did the story of Swavesey begin? What do we really know about the history of our village?

Tonight we will take a journey back through time and visit the town which was Medieval Swavesey.

Tickets 50p. Box Office.

7.30pm

RAGDOLL

Swavesey Village College

An evening of Youth Entertainment by Swavesey Action for Youth with re-cycled fashion, dance film 'Green is Clean' and music. Refreshments

Tickets: Lisa McManus 07917040502

Friday 25 June

10.30am-6.00pm

ARTIME ART CLUB/SWAVESEY CAMERA CLUB EXHIBITION

Memorial Hall

This exhibition celebrates the many talents of local residents. You will see a fine selection of photographs from the Camera Club and art from artists in the area. Come and watch the video of 'Swavesey through the Year' created from images taken by the Camera Club. Free

1.00pm

WILLOW LUNCHEON CLUB

Bethel Baptist Church

Our usual two course cooked meal in a warm and friendly environment followed today by the special festival entertainment (see below)

Tickets: £2 from: 231863

2.30pm

FESTIVAL ENTERTAINMENT

Bethel Baptist Church

You are invited to join Linda and Colin Smith as they entertain you singing songs from the past and favourites from the musicals.

Tickets: £1 for the entertainment only.

Transport available.

Ring 231863 to book your lunch and/or entertainment.

4.30-5.30 pm.

CHILDREN'S DISCO

The marquee on the village green

For all under 11s. Max. no. 70

Tickets £1 Box Office

7.30pm

JAZZ ON THE GREEN

Village Green

A first for the Festival! Jazz comes to Swavesey!

Rosie Val and the Cambridge Jazz Co and the Swavesey Village College Jazz Musicians.

Bring your own drinks; Hog Roast available.

Tickets £10 from Glyn Jones 01954 230650

Saturday 26 June

10.00am-4.30pm

ARTIME ART CLUB/SWAVESEY CAMERA CLUB EXHIBITION

Memorial Hall

Last chance to see this exhibition.

2.00pm

FAMILY FUN DAY

Village Green

A wide range of activities for the youngest to the oldest: games & races, bouncy castles, assault course, crazy golf and 'It's a knockout'. Swavesey Action for Youth will provide a series of activities including archery, gladiator duel and penalty shoot.

Forms for 'It's a Knockout' teams from Glyn Jones at 01954 230650

Bring your picnics, chairs and Gazebos and get yourselves organised for a great day which continues in the evening...

From 6.00pm onwards with

MUSIC & SONG

A night of Music and Song including a display of local young talent and some not so young! By popular request QED make a welcome return and take us through to the climax of the Festival...

FIREWORK DISPLAY

Festival 2010 finishes

with a bang!

11.00pm

Goodnight Swavesey

